



PROGRESSIVE PRINTERS INC.

www.planetbaron.com



Riverside Soda Creek, East & West
West Fraser, Weldwood

WILLIAMS LAKE
TRUCK LOGGERS ASSOCIATION

www.redshreds.com



BIKE & BOARD SHED

www.williamslake.ca

reservations@ov.com



Sponsors

DISCLAIMER - The authors of WILLIAMS LAKE BIKE TRAILS have tried hard to provide an up-to-date, accurate guide to the many biking trails of the Cariboo-Chilcotin. However, no guide is perfect and no responsibility is accepted for any discrepancies or lack of precision. Also, the users of the Williams Lake Cycling Club agree to waive any and all claims against the authors and staff for personal injury or mis-adventure while undertaking any outdoor recreation activity. Make sure you evaluate your ability in relation to the risks and challenges of the trails available. Be prepared for weather changes, bring first aid gear, go with a friend(s), and leave a copy of your trip plan with someone you trust.

AMBULANCE: 392-5402 • POLICE: 392-6211
For more information phone: (250) 398-7873



DESOUS MOUNTAIN

Williams Lake Bike Trails

www.puddlebike.com

Trail Descriptions

68 - DESOUS MOUNTAIN RD. (5.6 km) Gravel road up to MOF fire look out - trail head with outhouse and great views of the Chilcotin Plateau and Mountain, the Fraser River and Cariboo Mountains. An easy half hour climb.

69 - SOO LONG. (5.2 km) Advanced DH on the backside to Fraser River. Long flowy horse trail along the ridge through fir forest spilling out across an open slope with big limestone walls above. You'll finish up in a gully that's so fun it's a line most advanced riers will love. No stunts built up, just rock and dirt that drops approx. 2700 ft (840 meters) to English Road. The last stunt has a sweet steep clay face to ride and finish at a small pullout. **Level: Adv.**

70 - SUNSET BLVD. (3.8 km) New school frontside line road gaps - crazy stunts and jumps, it may not be steep but it sure is a hard intermediate enduro or expert stunt run. **Level: Int. & Exp.**

71 - COLT 45. Expert jump line. Starts uphill of cattleguard and cuts across Hairy Bush and Oosue rhythm, tables and gap jumps to keep you busy while you wait for another shuttle. **Level: Exp.**

72 - OOSUE. (3.3 km) Same start and finish as the classic. A healthy rock drop, sweet jumps all lined up you don't want to end. A little cliff section everyone loves. This trail has an XC finish or rip Colt 45 and Hairy Bush to the bottom cattleguard. **Level: Adv.**

73 - HAIRY BUSH. Starts after flat grassy field. Turn left and single track with stunts and jumps all the way down - grin and bear it. Stunts low and solid. **Level: Adv.**

74 - GODSPEED. (4.4 km) A must ride for experts. Has everything and some unique stuff too. Open then tight trees, natural gap jumps of all sizes, a loose open line finishes in a rock gully over waterfalls long and hard. Stay off when its wet. Finishes at a dry creek outflow on English Road just before private property. **Level: Exp.**

75 - PRIME & ENDLESS. (4 km) Expert direct line to English Road. Steep, loose, ugly, natural big stuff hidden from almost everyone - take a big bike if someone shows you. **Level: Exp.**

76 - DESOUS. (3 km) The classic. Original front side-trail - advanced DH. Sweet flowy single track, this trail has it all: small drops, jump lines, great features. Comes out at the bottom at the cattleguard. **Level: Adv.**

ACCESS

Head up Hwy 20 for 2 km and turn onto Dog Creek Rd. Drive about 17.5 kms and turn right on Desous Mountain Rd (before Springhouse). Drive 3.1 kms and turn at old van and cross cattleguard. Front side trails end here. Ride or drive 5.6 kms to lookout. Enjoy the view, sign the log book and descend for backsides to Fraser River - God Speed, Soo Long, Prime & Endless, you'll finish on English Road off Hwy 20 just before Sheep Creek bridge over the Fraser River.

NOTE

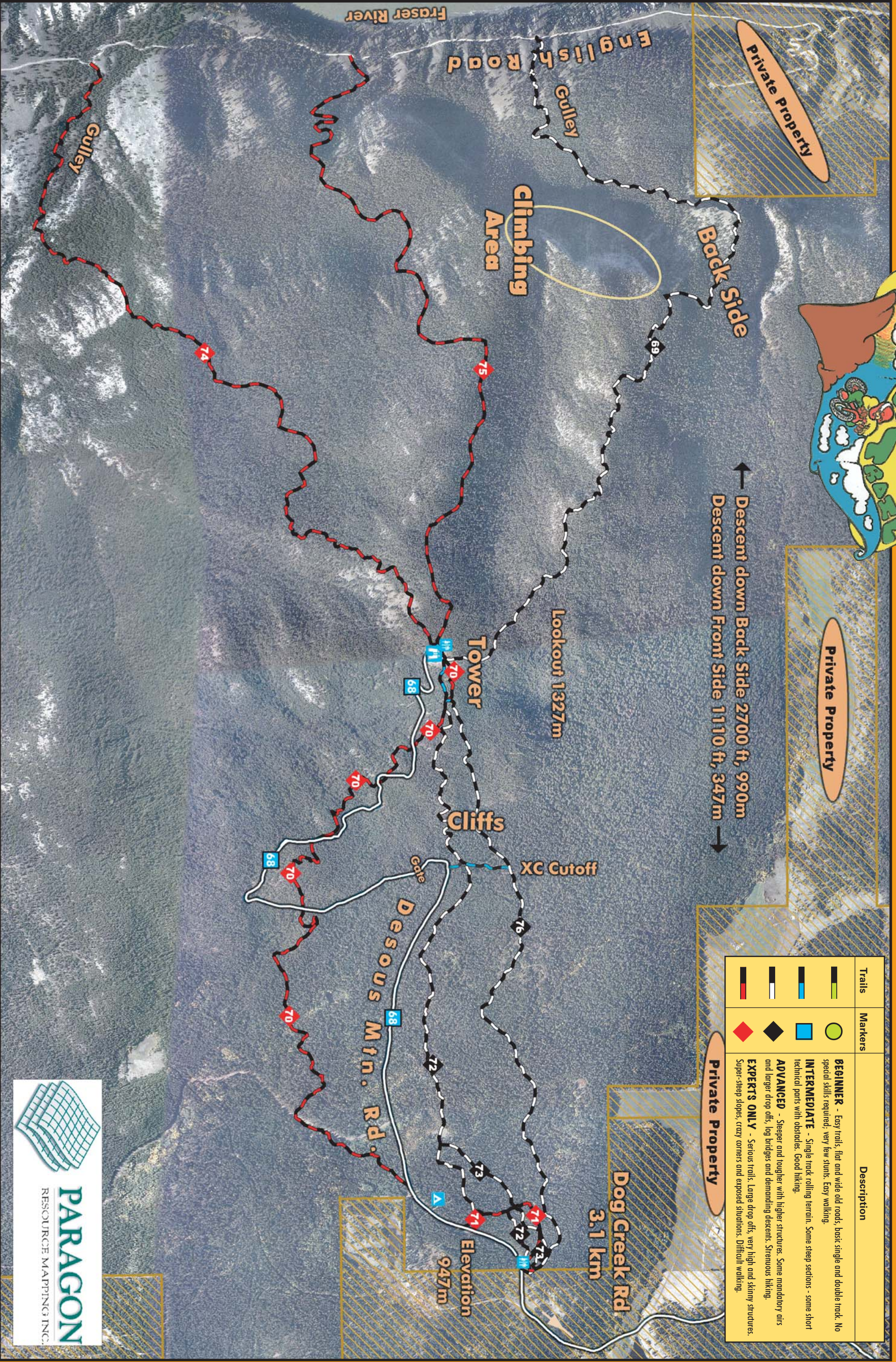
If you do come across cattle, stop and let them pass. Don't scare them away. Desous is dry and they may be drinking water near by.

Ethics

This area and these trails are shared by ranches, forest companies and recreationalists. Please show respect for all uses.

- Give cattle the right-of-way on trails
- Walk your bike when encountering cattle.
- Report sick or injured cattle to the Ministry of Forests, Range Section.
- Keep dogs under control at all times.
- Avoid damage to grasslands.
- Never leave fence gates open.
- Ride on open trails only.
- Leave no trace behind, stay on existing trails and practice low-impact cycling.
- Control your bicycle at all times.
- Always yield the trail to others, slow down when approaching hikers and be courteous.
- Do not harass wildlife.
- Plan ahead, carry First Aid gear.
- Respect private landowners and their land.
- Do not cross private land without permission.

DESOUS MOUNTAIN TRAIL NETWORK



Descent down Back Side 2700 ft, 990m
 Descent down Front Side 1110 ft, 347m

Trails	Markers	Description
		BEGINNER - Easy trails, flat and wide old roads, basic single and double track. No special skills required, very few stunts. Easy walking.
		INTERMEDIATE - Single track rolling terrain. Some steep sections - some short technical parts with obstacles. Good hiking.
		ADVANCED - Steeper and tougher with higher structures. Some mandatory aits and larger drop offs, log bridges and demanding descents. Strenuous hiking.
		EXPERTS ONLY - Serious trails. Large drop offs, very high and skinny structures. Super-steep slopes, crazy corners and exposed situations. Difficult walking.



TRAIL #	NAME	LEVEL
68	DESOUS MTN RD.	
69	SOOLONG	ADV.
70	SUNSET BLVD	EXP.
71	COLT 45	EXP.
72	OOSUE	ADV.
73	HARRY BUSH	ADV.
74	GODSPEED	EXP.
75	PRIME & ENDLESS	EXP.
76	DESOUS CLASSIC	ADV.

